

# Preparation unit—FR.L combination



## GFC Series



### Specification

Model	GFC200-06	GFC200-08	GFC300-08	GFC300-10	GFC300-15	GFC400-10	GFC400-15	GFC600-20	GFC600-25	
Fluid	Air									
Port size	1/8"	1/4"	1/4"	3/8"	1/2"	3/8"	1/2"	3/4"	1"	
Filtering grade	40 μm or 5 μm									
Pressure range	Semi-auto and automatic drain: 0.15~0.9MPa(20~130psi); Manual drain: 0.05~0.9MPa(7~130psi)									
Max. pressure	1.0MPa(145psi)									
Proof pressure	1.5MPa(215psi)									
Temperature range	-20~70°C									
Capacity of drain bowl	10CC		40CC			80CC		230CC		
Capacity of oil bowl	25CC		75CC			160CC		380CC		
Recommended lubricant	ISO VG 32 or equivalent									
Weight	430g		980g			1950g		4320g		
Constitute	Filter-Regulator	GFR200-06	GFR200-08	GFR300-08	GFR300-10	GFR300-15	GFR400-10	GFR400-15	GFR600-20	GFR600-25
	Lubricator	GL200-06	GL200-08	GL300-08	GL300-10	GL300-15	GL400-10	GL400-15	GL600-20	GL600-25

### Ordering code

GFC200 08 M L  F 1 W  K

#### Model

GFC200: G200 Series FR.L unit
GFC300: G300 Series FR.L unit
GFC400: G400 Series FR.L unit
GFC600: G600 Series FR.L unit

#### Code of reflux valve ②

Blank: No reverse flow valve is attached
K: Reverse flow valve is attached

#### Port size

Model	Port size
GFC200	06: 1/8"
	08: 1/4"
GFC300	08: 1/4"
	10: 3/8"
GFC400	15: 1/2"
	10: 3/8"
GFC600	20: 3/4"
	25: 1"

#### Thread type

Blank: PT
T: NPT
G: G

#### Filtering grade

Blank: 40 μm
W: 5 μm

#### Scale

1: MPa
2: psi
3: bar

#### Pressure gauge shape

F: Square
C: Circular

#### Drain type

Drain type	Adaptable product's series
Blank: Semi-auto drain	GFC200, GFC300
M: Manual drain	GFC400, GFC600
A: Automatic drain	GFC300, GFC400, GFC600

#### Type code

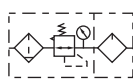
Blank: Standard
L: Lower pressure ①

#### Pressure gauge

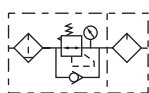
Blank: Pressure gauge
N: No pressure gauge

### Symbol

No reflux valve is attached



Reflux valve is attached

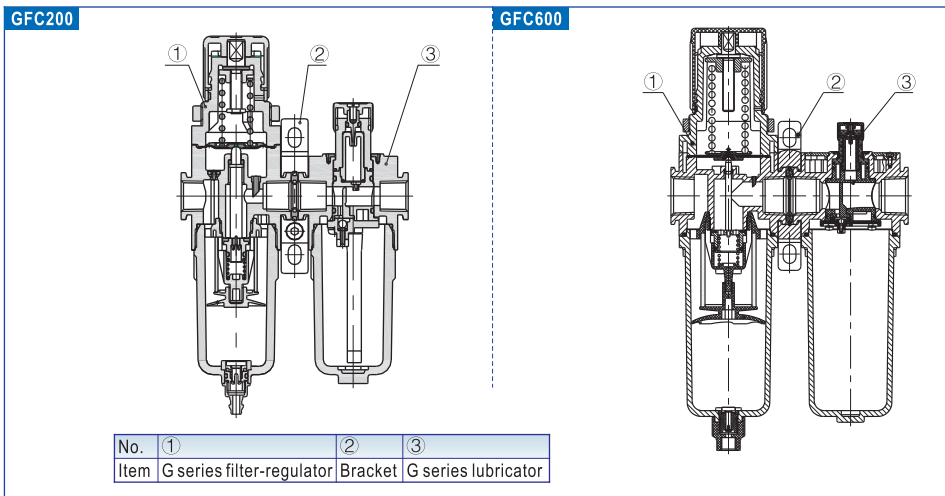


### Product feature

1. Quick and reliable mounting clamps makes it convenient to install and use.
2. The performance of pressure adjustment is reliable with high precision.
3. The efficiency of eliminating moisture and solid grain is high.
4. Three drain types are available: manual drain, semi-auto drain and automatic drain.

① The maximum work pressure of lower pressure type is 0.4MPa(58psi). ② Please refer to page 144 for details of reflux valve.

### Inner structure

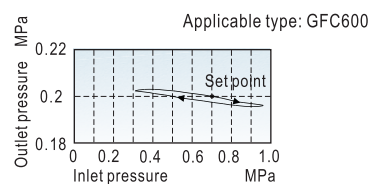
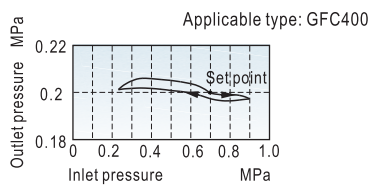
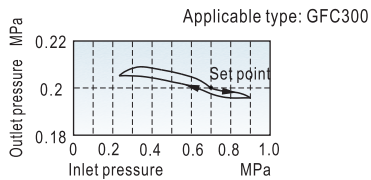
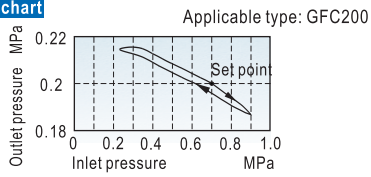


# Preparation unit—FR.L. combination

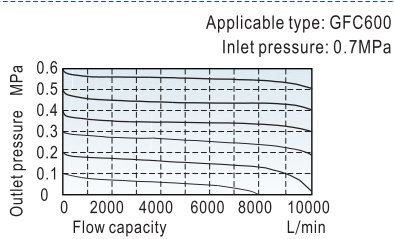
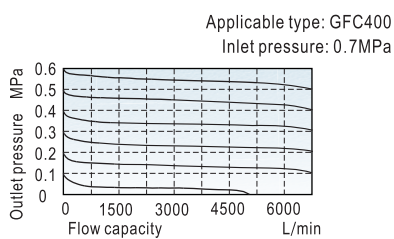
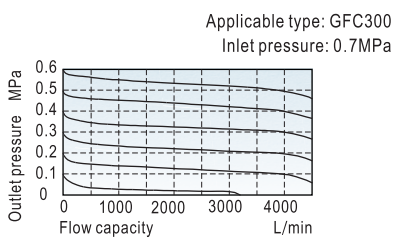
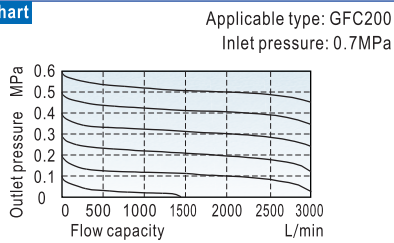
## GFC Series

### Pressure and feature of flow

#### Pressure chart

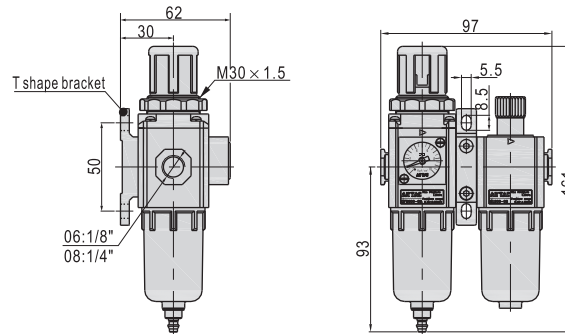


#### Flow chart

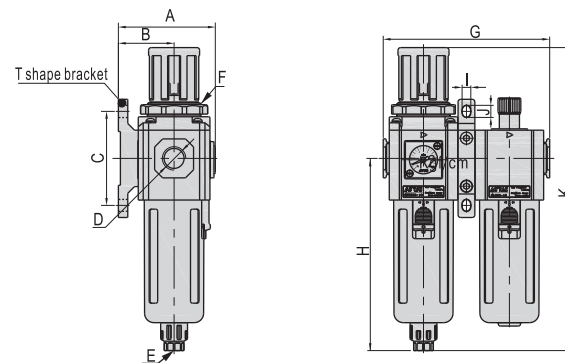


### Dimensions

#### GFC200



#### GFC300/GFC400



Model\Item	A	B	C	D	E	F	G	H	I	J	K
GFC300-08	72	41.5	70	1/4"	1/8"	M40x1.5	124	143	6.5	9	225.5
GFC300-10	72	41.5	70	3/8"	1/8"	M40x1.5	124	143	6.5	9	225.5
GFC300-15	72	41.5	70	1/2"	1/8"	M40x1.5	124	143	6.5	9	225.5
GFC400-10	89	50	80	3/8"	1/4"	M55x2.0	164	166.5	8.6	12	270.5
GFC400-15	89	50	80	1/2"	1/4"	M55x2.0	164	166.5	8.6	12	270.5

#### GFC600

